

FIELD CATTLE FENCING _ ELECTRIC !!

September 2016MMM

The new electric fence is up and operational. It consists of round wooden posts ~3 ½' tall spaced between 50' and 100' apart (depending on terrain), and painted orange on top.

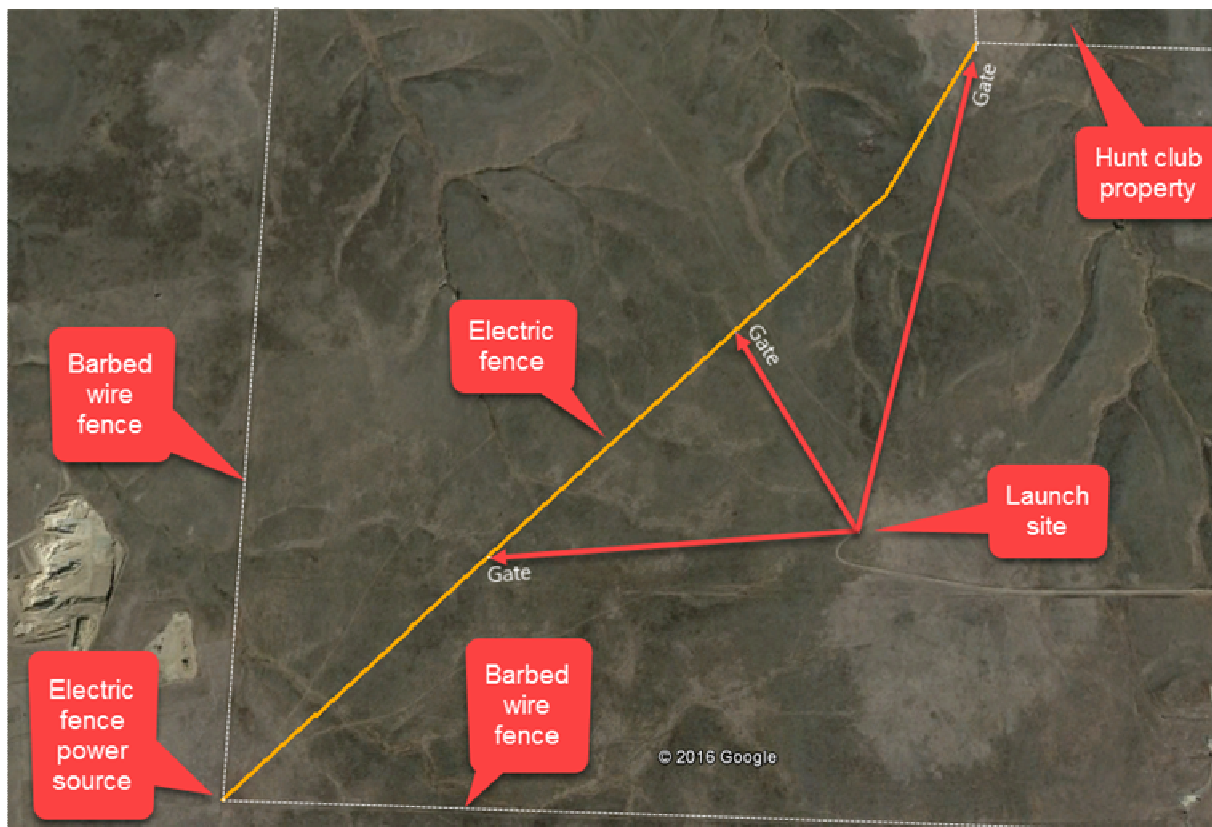
The wire runs a little less than 3' off the ground and is suspended by insulators that can be opened to free the wire if necessary. The wire is quite thick (as electric fence wire goes) but could easily be overlooked while chasing.

There are three walk gates about 15' wide, but the one furthest SW isn't at the corner where the rancher's diagram shows (see map below). The gates can be opened by using an insulated handle.

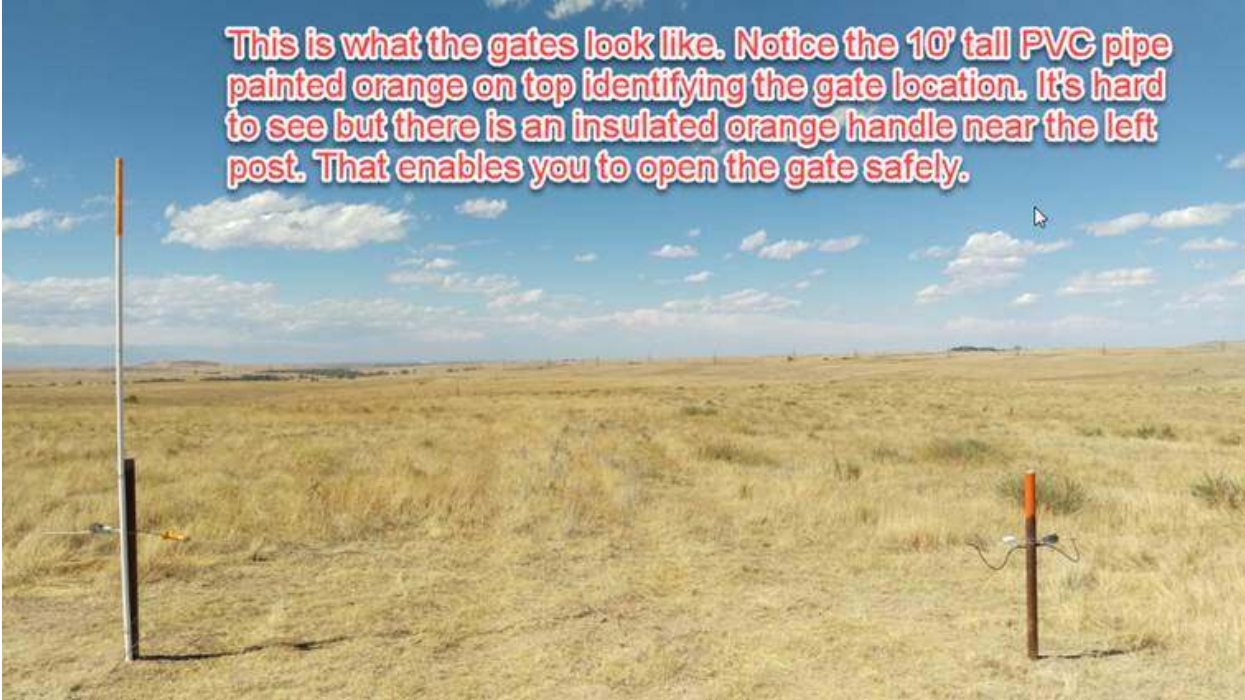
The power comes from a battery trailer with solar panels at the SW end of the fence (where the barbed wire fences come together at the watering tank). The power can be shut off at the trailer if necessary.

I would recommend that we use the gates and see how it goes for the remaining scrambles this year.

I don't see an issue with coordinating with the rancher next year for our two big contests to shut off the power and leave the gates open. Although we would also have the ability to lay the wire on the ground at other places along the fence-line, I don't envision that as being necessary. I did not go out to the other more remote fence but it will obviously be similar. Although the rancher is aware that these fences 'cramp our style', he has done a really good job of accommodating our chasing needs. See 4 pics below.



This is what the gates look like. Notice the 10' tall PVC pipe painted orange on top identifying the gate location. It's hard to see but there is an insulated orange handle near the left post. That enables you to open the gate safely.



Gate at the corner of the hunt club compound



Horse jump gates. It is safe to step over these if necessary.

